

# GET TO KNOW YOUR COMMUNITY SERVICES

5 DEPARTMENTS: ● Cultural Services ● Natural Areas ● Recreation ● Parks ● Park Planning & Development

TOTAL ANNUAL BUDGET OVERALL: \$53.5 million

**\$280** per capita  
spending\*

MORE THAN  
**100K**  
ANNUAL  
VOLUNTEER  
HOURS

**50**  
PARKS



**45**  
MILES  
OF PAVED TRAILS

**55K**  
TREES MAINTAINED

OUTDOOR  
BASKETBALL  
COURTS:  
**THIRTY-FOUR**



**ONE**  
WHITEWATER  
PARK

**41**  
PLAYGROUNDS

**135K**  
SQUARE  
FEET OF  
FLOWERBEDS

**45K**  
FLOWERS  
PLANTED ANNUALLY

**4** DOG  
PARKS

**3** GOLF COURSES

**TWO**  
CEMETERIES

**TWO**  
DISC GOLF COURSES

**1** ACCESSIBLE  
PLAYGROUND

**47**  
TENNIS COURTS

**FOUR**  
SKATE PARKS

**THREE**  
SPLASH PADS



**PICKLEBALL  
COURTS**  
**45**

**5** PARK PLANNING  
AND DESIGN  
AWARDS

**TWENTY-TWO**  
ACTIVE PARK PLANNING  
AND DESIGN PROJECTS



**10** TOTAL  
RECREATION  
FACILITIES

**ARO**  
ADAPTIVE RECREATION  
OPPORTUNITIES PROGRAM

**3** INDOOR  
POOLS

**ONE**  
OUTDOOR POOL

**2** ICE  
ARENAS

**2** LICENSED  
CHILDCARE  
PROGRAMS

**100K**  
RECREATOR  
ACTIVITY GUIDES

DISTRIBUTED  
YEARLY

**THREE**  
GYMNASIUMS

**1 FARM**

**TWO**  
INDOOR WALKING TRACKS

**1** POTTERY  
STUDIO

**MORE THAN  
1,000,000**  
ANNUAL RECREATION  
PROGRAM  
PARTICIPANTS



**37,607**  
ACRES OF  
NATURAL AREAS

**FIFTY-TWO**  
NATURAL AREAS

**108**  
MILES  
OF NATURAL  
AREA TRAILS

**THIRTY-THREE**  
CONSERVATION  
EASEMENTS



**6** ONSITE  
RANGER/  
CARETAKER  
RESIDENCES

**425**  
ANNUAL NATURAL AREAS  
ACTIVITIES & PROGRAMS

**1** 1,187 SEAT  
PERFORMANCE HALL



**113,367**  
TICKETS SOLD  
ANNUALLY AT  
THE LINCOLN  
CENTER

**200,000**  
LIGHTS ILLUMINATED  
AT GARDEN OF LIGHTS

**1** BOTANICAL  
GARDEN

**ONE**  
AMPHITHEATRE

**1** BUTTERFLY HOUSE  
WITH 42 SPECIES  
OF BUTTERFLIES

**8** COMMUNITY  
GARDENS  
WITH 152 PLOTS

**38,000**  
ARTIFACTS  
IN MUSEUM  
ARCHIVE

TO DATE:  
MORE THAN  
**160**

ART IN  
PUBLIC PLACES  
PROJECTS COMPLETED



**133**  
PIANOS  
PAINTED  
AROUND  
TOWN

**ONE**  
MUSEUM  
OF DISCOVERY





# EXPLORE COMMUNITY SERVICES



Nestled against the foothills of the Rocky Mountains, Fort Collins is home to an active community population (175,000 residents), a thriving university, engaged businesses and a strong public school system.

Under the Community Services Division are five departments who focus on the ongoing health, well-being, entertainment, environmental preservation and cultural development of the community. Community Services remains quality focused and customer centered, and working continually to create authentic and accessible experiences across Fort Collins.

21-23630

Auxiliary aids and services are available for persons with disabilities.

## CULTURAL SERVICES

### The Lincoln Center

📞 970.221.6730  
@ [lcinfo@fcgov.com](mailto:lcinfo@fcgov.com)  
📍 417 West Magnolia Street  
🌐 [lctix.com](http://lctix.com)

### The Gardens on Spring Creek

📞 970.416.2486  
📍 2145 Centre Ave.  
@ [gardens@fcgov.com](mailto:gardens@fcgov.com)

### Museum of Discovery

📞 970.221.6738  
📍 408 Mason Ct.  
🌐 [fcmo.org](http://fcmo.org)

### Art in Public Places

📞 970.416.2789  
@ [emartin@fcgov.com](mailto:emartin@fcgov.com)  
📍 417 West Magnolia Street  
🌐 [fcgov.com/artspublic](http://fcgov.com/artspublic)

### Administrative Offices

📞 970.416.2935  
📍 215 N. Mason Street  
🌐 [fcgov.com/culturalservices](http://fcgov.com/culturalservices)



## NATURAL AREAS

### Soapstone Prairie

📍 22998 Rawhide Flats Road, Wellington

### Gateway

📍 5216 Poudre Canyon Highway, Fort Collins

### Bobcat Ridge

📍 10184 W. County Road 32C, Loveland

### Primrose Studio

📍 4300 Michaud Lane, Fort Collins

Complete list of Natural Areas and facilities available at [fcgov.com/naturalareas](http://fcgov.com/naturalareas)

### Administrative Offices

📞 970.416.2815  
@ [naturalareas@fcgov.com](mailto:naturalareas@fcgov.com)  
🌐 [fcgov.com/naturalareas](http://fcgov.com/naturalareas)

## RECREATION

### Fort Collins Senior Center

📞 970.221.6644  
📍 1200 Raintree Drive  
🌐 [fcgov.com/seniorcenter](http://fcgov.com/seniorcenter)

### Northside Aztlan Community Center

📞 970.221.6256  
📍 112 E. Willow Street  
🌐 [fcgov.com/northside](http://fcgov.com/northside)

### Foothills Activity Center

📞 970.416.4280  
📍 241 E. Foothills Parkway  
🌐 [fcgov.com/foothillsactivitycenter](http://fcgov.com/foothillsactivitycenter)

### EPIC

📞 970.221.6683  
📍 1801 Riverside Avenue  
🌐 [fcgov.com/epic](http://fcgov.com/epic)

### Mulberry Pool

📞 970.221.6657  
📍 424 Mulberry Street  
🌐 [fcgov.com/mulberrypool](http://fcgov.com/mulberrypool)

### City Park Pool

📞 970.224.6363  
📍 1599 City Park Drive  
🌐 [fcgov.com/cityparkpool](http://fcgov.com/cityparkpool)

### The Farm

📞 970.221.6665  
📍 600 Sherwood Street  
🌐 [fcgov.com/thefarm](http://fcgov.com/thefarm)

### Administrative Offices

📞 970.221.6655  
@ [recreation@fcgov.com](mailto:recreation@fcgov.com)  
📍 215 N. Mason Street  
🌐 [fcgov.com/recreation](http://fcgov.com/recreation)



## PARKS

### COMMUNITY PARKS

**City Park**  
📍 1500 W. Mulberry Street

**Edora Park**  
📍 1420 E. Stuart Street

**Fossil Creek Park**  
📍 5821 S. Lemay Avenue

**Lee Martinez Park**  
📍 600 N. Sherwood Street

**Rolland Moore Park**  
📍 2201 S. Shields Street

**Spring Canyon Park**  
📍 2626 W. Horsetooth Road

**Twin Silo Park**  
📍 5480 Ziegler Road

Visit [fcgov.com/parks](http://fcgov.com/parks) for a full list of neighborhood parks and locations.

### GOLF COURSES

**City Park Nine**  
📍 411 South Bryan Avenue

**Collindale Golf Course**  
📍 1441 East Horsetooth Road

**Southridge Golf Course**  
📍 5750 South Lemay Avenue

### Administrative Offices

📞 970.221.6660  
@ [parkshop@fcgov.com](mailto:parkshop@fcgov.com)  
📍 416 South Bryan Avenue  
🌐 [fcgov.com/parks](http://fcgov.com/parks)

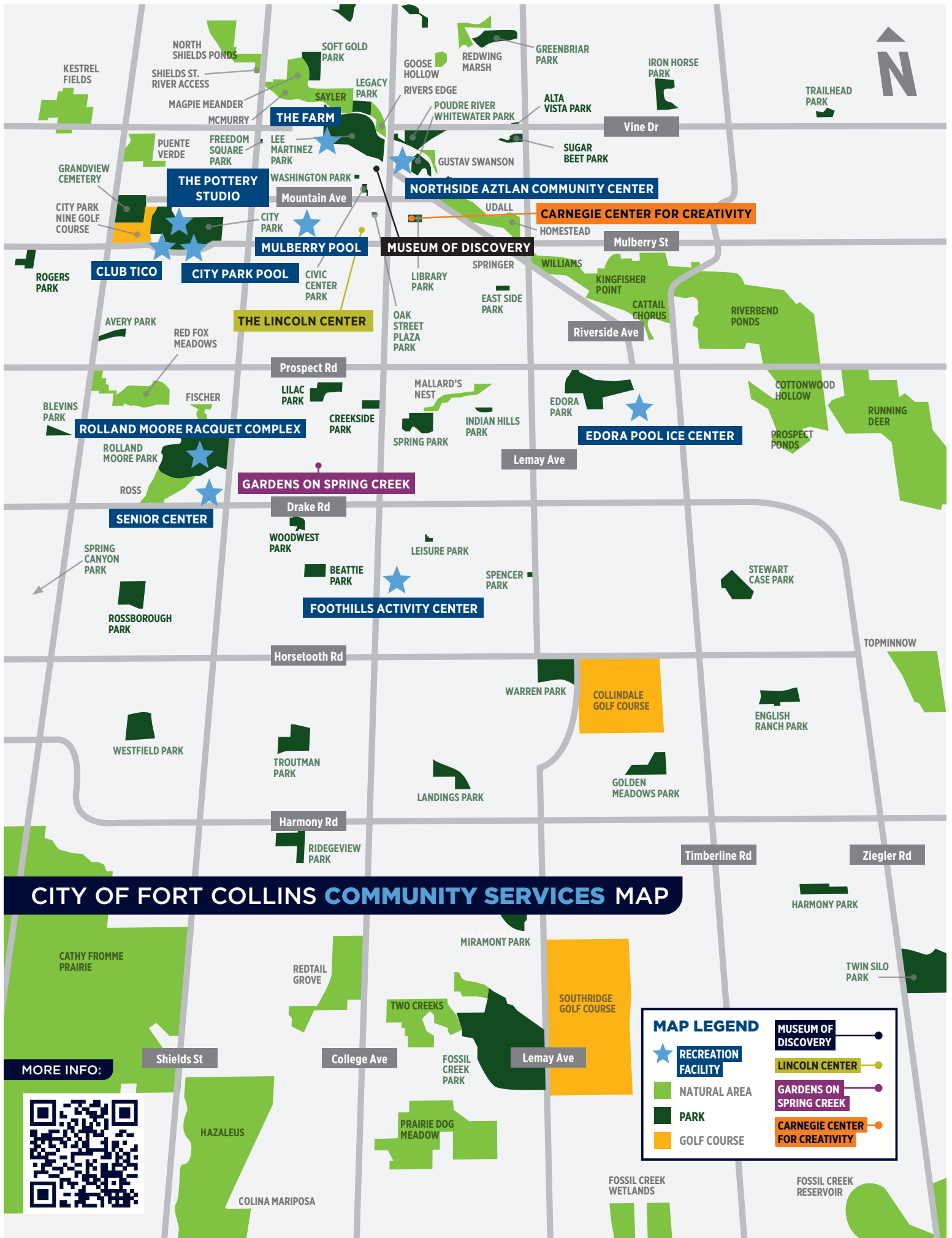
## PARK PLANNING & DEVELOPMENT

### ADMINISTRATIVE OFFICES

📞 970.416.8033  
@ [parkplanning@fcgov.com](mailto:parkplanning@fcgov.com)  
📍 215 N. Mason Street  
🌐 [fcgov.com/parkplanning](http://fcgov.com/parkplanning)

*Parks, Recreation, and Park Planning & Development are nationally accredited*





CITY OF FORT COLLINS **COMMUNITY SERVICES** MAP

MORE INFO:



**MAP LEGEND**

	RECREATION FACILITY		MUSEUM OF DISCOVERY
	NATURAL AREA		LINCOLN CENTER
	PARK		GARDENS ON SPRING CREEK
	GOLF COURSE		CARNEGIE CENTER FOR CREATIVITY