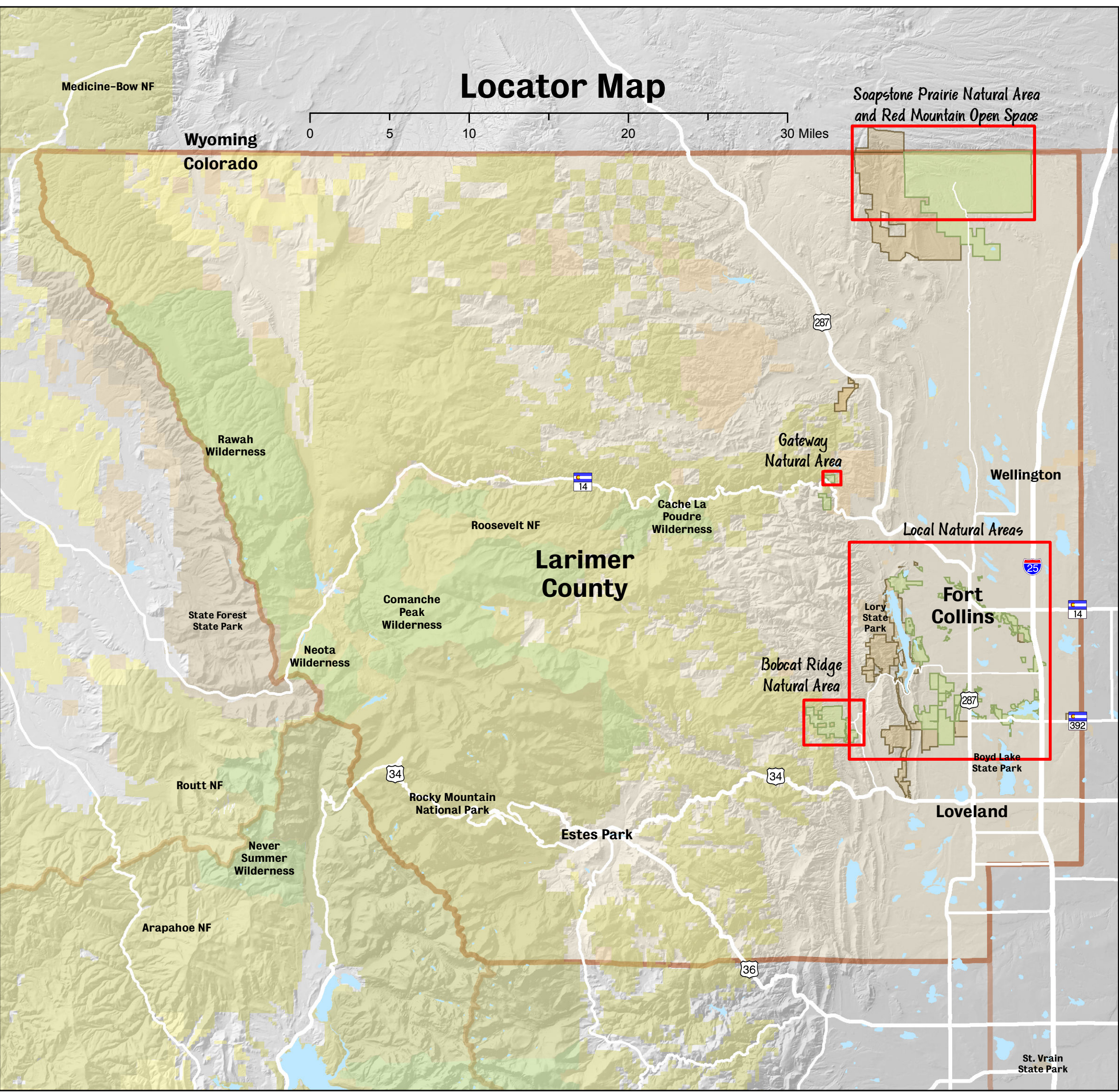
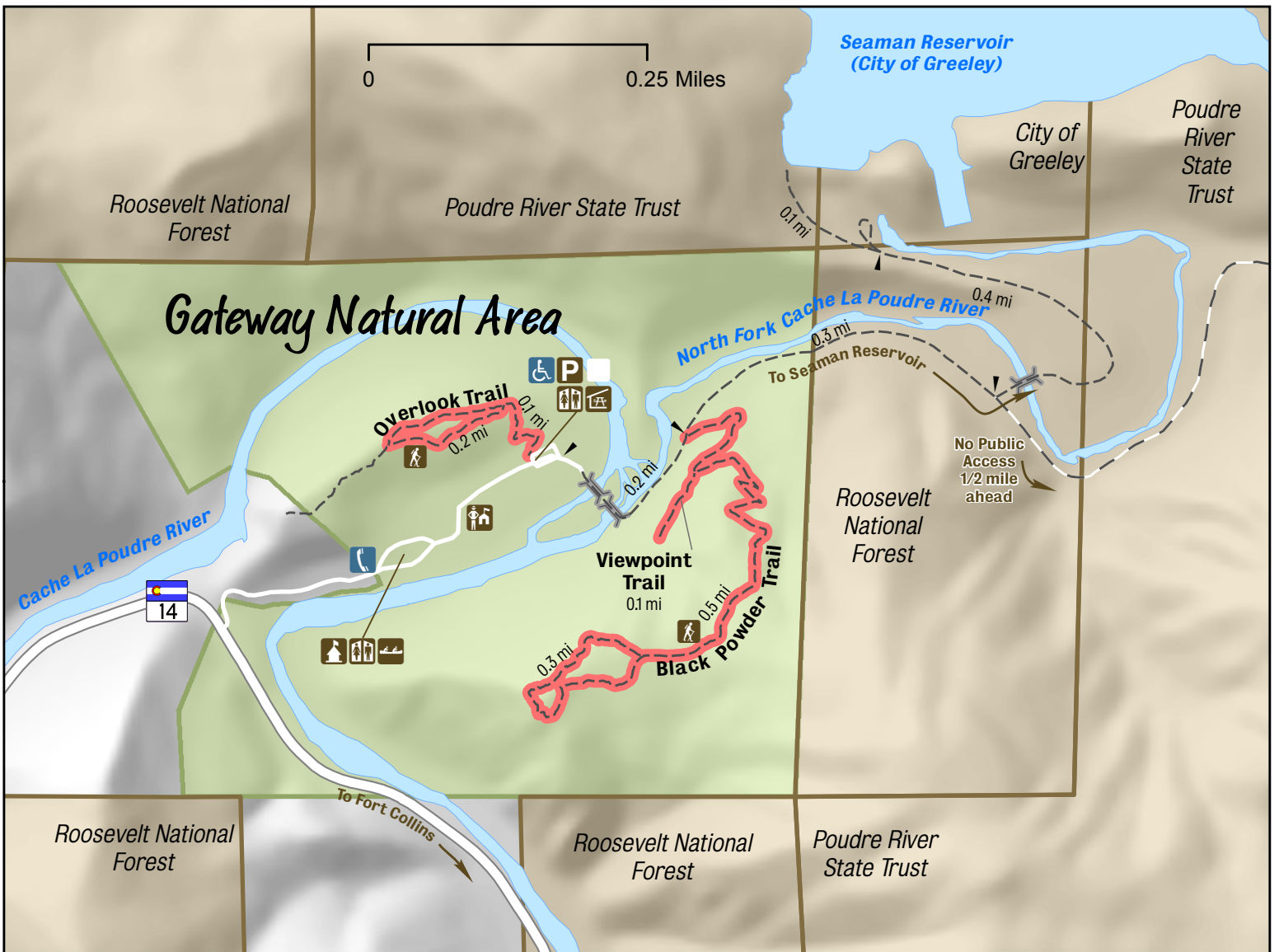
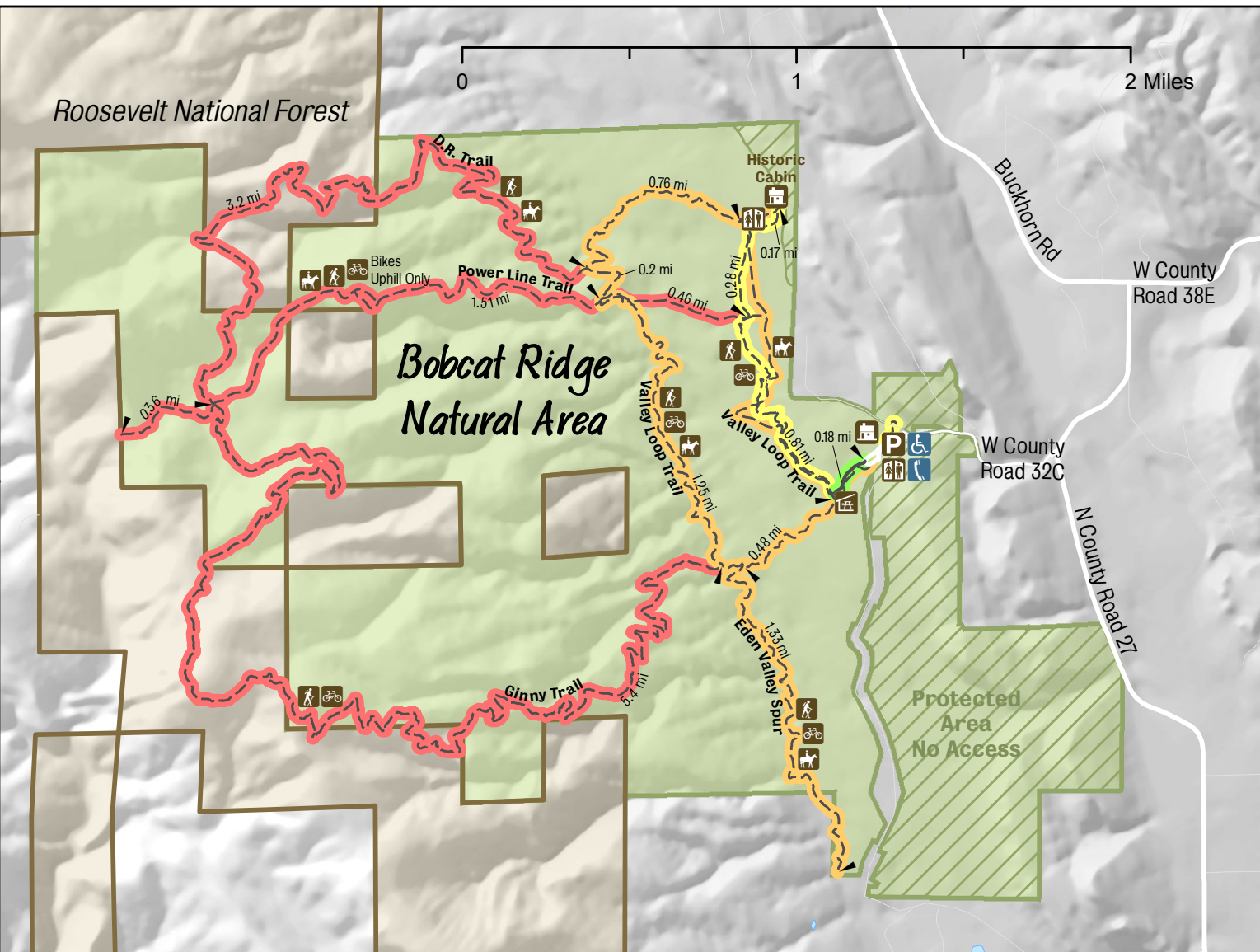
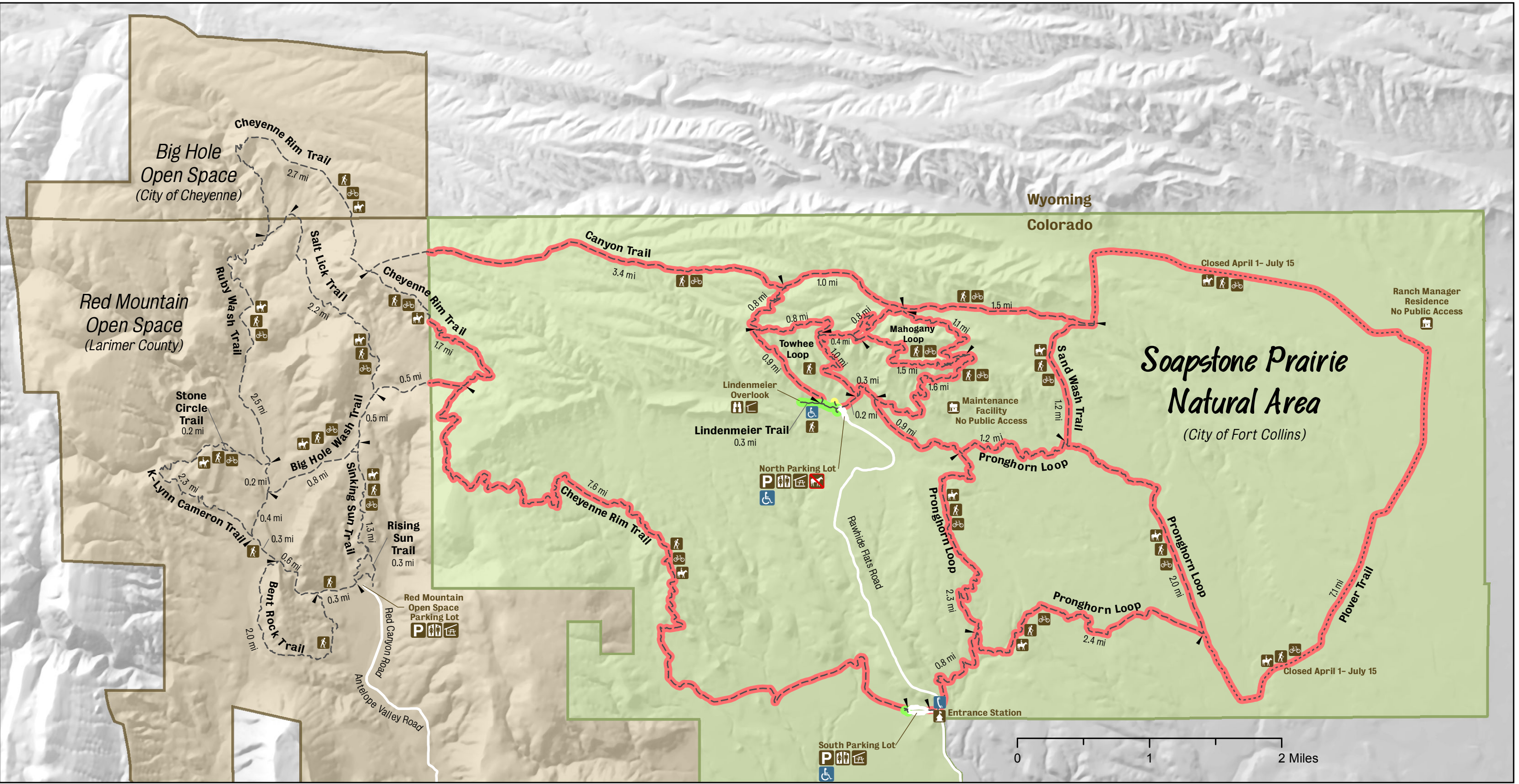


Trail Accessibility



Locator Map

City of Fort Collins Trails Wheelchair Accessibility

- Easy
- Moderate
- Difficult
- Very Difficult
- Wheelchair Accessible
- Parking
- Restroom
- Dog Park
- Natural Areas Building
- Paved Trail
- Natural Surface Trail
- Seasonal Use Trail
- Fort Collins Natural Area
- Open Space



Date: June 16, 2014

Accessible Trail and Facility Assessment Table for City of Fort Collins Natural Areas

Last updated August 21, 2019

Motorized Mobility Device (MMD) must meet current definition and safety requirements (see April 25, 2014 revised Motorized Mobility Devices Policy).

Site	Open to Public	Trail	Trail Length (at site only)	Trail Width	Trail Type	Wheelchair/MMD* Rating	ADA Parking	Comments
Arapaho Bend	Yes	Main Trail - North Parking Lot to Harmony Parking	2 mi	10 ft	Concrete	Easy	Yes	Three parking lots are available at Arapaho Bend. The north parking lot at the corner of E Horsetooth Road and Strauss Cabin Road, offers ADA accessible parking, with access to the paved trail system. The south parking is located at the Harmony Park & Ride, off E Harmony Road. This parking facility offers ADA parking spaces, accessible vault toilets, and access to the paved trail system. The middle parking lot off Strauss Cabin Road is a natural surface parking lot with natural surface trail connections to paved trail system.
		Rigden Loop (paved section)	1 mi	10 ft	Concrete	Easy		
		Rigden Loop (non-paved section)	1 mi	10 ft	Dirt/Gravel	Moderate		
		Side Spurs to Ponds and some Main Loop Connection	1.7 mi	18 in to 3 ft	Dirt/Gravel	Difficult		
Bobcat Ridge	Yes	Historic Shed Interp Trail	0.1 mi	4-5 ft	Crusher Fines	Moderate	Yes	The parking lot at Bobcat Ridge (W County Road 32C) offers ADA parking with paved access to vault toilets. The paved trail from the parking lot leads to the accessible picnic shelter. The parking lot also offers visitors a mobility assist horse ramp. The ramp is constructed with a moderately accessible crusher fine surface.
		Shelter	0.4 mi	10 ft	Concrete	Easy		
		Valley Loop East to Cabin	1.0 mi	4-5 ft	Crusher Fines	Moderate		
		Valley Loop West	3.0 mi	4 ft	Dirt/Rocky	Difficult		
		Eden Valley Spur	1.3 mi	4 ft	Dirt/Rocky	Difficult		
		D.R.	3.2 mi	4 ft	Dirt/Rocky	Very Difficult		
		Ginny	5.4 mi	18-24 in	Dirt/Rocky	Very Difficult		
		Powerline Road East of Tipi Rings	0.5 mi	8 ft	Dirt/Rocky; incised 2-track	Very Difficult		
		Powerline Road West of Tipi Rings	1.8 mi	8 ft	Dirt/Rocky; incised 2-track	Very Difficult		

Site	Open to Public	Trail	Trail Length (at site only)	Trail Width	Trail Type	Wheelchair/ MMD* Rating	ADA Parking	Comments
Butterfly Woods	Yes	Poudre River Trail	0.4 mi	10 ft	Concrete	Easy	No	ADA accessible parking and paved trail access is available 1.25 miles to the east at the Poudre Trail Parking (1453 N Taft Hill Rd).
Cathy Fromme Prairie	Yes	Fossil Creek Trail	2.5 mi	10 ft	Concrete	Easy	Yes	Two parking lots are available at Cathy Fromme Prairie. The east parking lot located off S Shields Street offers ADA parking, accessible vault toilet and access to the paved trail system. The west parking lot located off Fromme Prairie Way offers ADA parking, accessible vault toilet and access to the paved trail system.
		Raptor Observation Trail	0.1 mi	6 ft	Concrete	Easy	Yes	
Cattail Chorus	Yes	Poudre River Trail	0.7 mi	10 ft	Concrete	Easy	No	ADA parking and paved Poudre River Trail access available at numerous access points throughout the trail system.
		Spring Creek Trail	0.3 mi	10 ft	Concrete	Easy		
		Spur Interp Trail	0.1 mi	4 ft	Dirt	Difficult		
Colina Mariposa	Yes	Eastside Neighborhood Trail-- Trilby to Stonington	1.0 mi	4-5 ft	Grass/Dirt	Difficult	No	ADA parking and paved access to the Long View Trail available two miles south at Sunset Vista Natural Area (City of Loveland). This is located at 1323 W 57th Street.
		Long View Trail	1.1 mi	10 ft	Concrete	Easy		
Cottonwood Hollow	Yes	Cottonwood Hollow Trail via North ELC	0.4 mi	4 ft	Crusher Fines	Moderate	No	ADA parking and accessible vault toilet is available 1/10 miles to the east at Running Deer Natural Area (East Prospect Road).
		Trail to North ELC and Running Deer	0.3 mi	8-10 ft	Dirt/Gravel	Difficult		
Coyote Ridge	Yes	Coyote Ridge Trail to Cabin	1.0 mi	10-12 ft	Gravel Road	Difficult	Yes	The parking lot at Coyote Ridge (South County Road 19) offers three ADA accessible parking spaces with paved access to the educational kiosk. There is no paved ADA accessible access to vault toilets from the parking lot.
		Hidden Clues Trail	0.25 mi	5 ft	Crusher Fines	Moderate		
		Cabin to Rimrock Open Space	1.1 mi	12-18 in	Dirt/Rocky	Very Difficult		
		Parking Lot to Kiosk	<0.1 mi	5 ft	Concrete	Easy		
Eagle View	No	N/A	N/A	N/A	N/A	N/A	N/A	The 2017 Fossil Creek Plan states this site will be open to the public with trails and other recreational amenities within the next ten years.

Site	Open to Public	Trail	Trail Length (at site only)	Trail Width	Trail Type	Wheelchair/ MMD* Rating	ADA Parking	Comments
Fischer	Yes	Spring Creek Trail	0.3 mi	10 ft	Concrete	Easy	No	ADA parking, accessible restrooms, and access to Fischer, via the Spring Creek trail, is available near the tennis complex at Rolland Moore Park (S Shields Street).
		Ditch single track	0.7 mi	12-24 in	Dirt	Moderate		
Foothills Trail (Sections of trail not within Natural Area property boundary)	Yes	Foothills Trail	3 mi	12-18 in	Dirt/Rocky	Very Difficult	N/A	Trail very narrow and steep in many sections, with heavy recreational traffic at times.
Fossil Creek Reservoir	Yes	Heron Loop	0.3 mi	10 ft	Concrete	Easy	Yes	The parking lot at Fossil Creek Reservoir (Carpenter Road) offers ADA parking with paved access to restrooms. The paved trail from the parking lot leads to an outdoor classroom shelter and access to the Heron Loop trail, which offers various picnic tables and an accessible birding platform. Cattail Flats trail is closed to all users November 15 – March 1 (for nesting raptors).
		Sandpiper Trail	0.5 mi	10-12 ft	Road Base	Moderate		
		Cattail Flats	2 mi	10-12 ft	Road Base	Moderate		
		Carpenter Rd Trail	1 mi	8 ft	Crusher Fines	Moderate		
		Carpenter Rd Trail - Sandpiper Trail Connector	0.7 mi	8 ft	Crusher Fines	Moderate		
Fossil Creek Wetlands	Yes	Barbuda Dr Trail	0.1 mi	4 ft	Crusher Fines	Moderate	No	On-street parking and paved access to concrete trail is available to the west off Woods Landing Drive.
		Fossil Creek Trail	0.5 mi	10 ft	Concrete	Easy		
Gateway	Yes	Picnic Area	200 ft	4 ft	Concrete	Easy	Yes	The easternmost parking area at Gateway (HWY 14) offers ADA parking with paved access to vault toilets. The paved trail from the vault toilet leads to an accessible picnic area and educational kiosk. All other access points and trails are narrow, rocky and steep.
		Overlook Trail	0.35 mi	12-18 in	Dirt/Rocky	Very Difficult		
		Black Powder Trail	0.75 mi	12-18 in	Dirt/Rocky	Very Difficult		
		HWY 14 Pedestrian Access Trail	0.35 mi	12 ft	Road Base	Easy		
		View Point Trail	0.1 mi	12-18 in	Dirt/Rocky	Very Difficult		
Goose Hollow	Yes	Horseshoe Trail	0.3 mi	44 in	Dirt	Moderate	No	On-street parking available to the east along Redwood Street.
Gustav Swanson	Yes	Gustav Swanson Trail	0.4 mi	5-6 ft	Concrete	Easy	Yes	The parking lot at Gustav Swanson (Linden Street) offers ADA parking with paved access to a vault toilet and paved trail. Access to Poudre River Trail also available by accessing connecting sidewalk to the south.

Site	Open to Public	Trail	Trail Length (at site only)	Trail Width	Trail Type	Wheelchair/ MMD* Rating	ADA Parking	Comments
Hazaleus	Yes	Long View Trail	0.7 mi	10 ft	Concrete	Easy	No	ADA parking, accessible vault toilets, and paved access to the Long View Trail available 1/2 miles to the north at Cathy Fromme Prairie Natural Area (S Shields Street).
Homestead	Yes	Poudre River Trail	0.6 mi	10 ft	Concrete	Easy	No	ADA parking and paved Poudre River Trail access available at numerous access points throughout the trail system.
		Pond Trail	0.35 mi	10 ft	Dirt/Gravel	Moderate		
		River and Pond Spur Trails	0.35	5 ft	Dirt/Gravel	Moderate		
Kingfisher Point	Yes	Poudre River Trail	1.2 mi	10 ft	Concrete	Easy	No	ADA parking and paved Poudre River Trail access available at numerous access points throughout the trail system. The Willow Trail is narrow in parts with willow shrubs growing up in between 2-track road.
		Timberline to Nix	0.55 mi	12-14 ft	Gravel Road	Moderate		
		Willow Trail to Poudre Trail from Hoffman Mill Road	0.1 mi	18 in-3 ft	Dirt/Gravel	Very Difficult		
Magpie Meander	Yes	Viewing Deck Trail	70 ft	42 in	Boardwalk	Easy	No	ADA parking spaces and accessible restroom available at neighboring Soft Gold Park (Hickory Street).
		Access from Soft Gold Park	210 ft	6 ft	Concrete	Easy		
		From Swale to Boardwalk	100 ft	6 ft	Crusher Fines	Moderate		
		Pond Trail	0.1 mi	18-24 in	Dirt	Very Difficult		
		Hickory to McMurry	0.2 mi	8 ft	Dirt	Difficult		
		Bridge into McMurry	20 ft	47 in	Wood plank	Easy		

Site	Open to Public	Trail	Trail Length (at site only)	Trail Width	Trail Type	Wheelchair/MMD* Rating	ADA Parking	Comments
Mallard's Nest	Yes	Spring Creek Trail	0.4 mi	10 ft	Concrete	Easy	No	ADA parking and restrooms are available to the east (0.7 miles), along the Spring Creek trail at Edora Park (Welch Street).
Maxwell	Yes	Foothills Trail North to Ditch Road	0.5 mi	4 ft	Dirt	Difficult	Yes	The parking lot at Maxwell (County Road 42C) offers ADA parking with paved access to vault toilets and informational kiosk. Single track natural surface trails are steep and rocky. All pedestrian access gates are a minimum of 48-inch wide.
		Foothills Trail from Ditch Road to Centennial	1 mi	18-24 in	Dirt/Rocky	Very Difficult		
		Overlook Trail	0.3 mi	18-24 in	Dirt/Rocky	Very Difficult		
		Trail to Overland Ponds/Prospect	0.7 mi	4-10 ft	Dirt/Gravel	Difficult		

Site	Open to Public	Trail	Trail Length (at site only)	Trail Width	Trail Type	Wheelchair/ MMD* Rating	ADA Parking	Comments
McMurry	Yes	Trail to McMurry Pond from parking lot	0.1 mi	8 ft	Dirt/Road base	Difficult	No	The parking lot at McMurry (Hemlock Street) is constructed with road base material. ADA parking, paved vault toilet, and paved Poudre River Trail access is available at Shields River Access (N Shields Street).
		"Y" Intersection to Boat Ramp	315 ft	6 ft	Dirt	Difficult		
		"Y" Intersection to Pond/River	280 ft	6 ft	Dirt	Difficult		
		River Trail to Salyer	0.2 mi	3-4 ft	Dirt	Difficult		
		River Trail West and Pond Trails	1.0 mi	18"-8 ft (80% < 3 foot)	Dirt/River Rock	Difficult		
Nix Farm Facility	Yes	Nix Farm House and Main Offices	100 ft	5 ft	Concrete	Easy	Yes	ADA parking and restrooms at Nix Farm Facility (Hoffman Mill Road) are for office building visitors only; no Poudre River Trail parking or public restroom.
		Nix Farm House	50 ft	3 ft	Crusher Fines	Moderate		
		Poudre River Trail spur	500 ft	6 ft	Concrete	Easy		
North Shields Ponds	Yes	Concrete Path from ADA Parking to Shelter/Port-a-Let	110 ft	4 ft	Concrete	Easy	Yes	The parking lot at North Shields Ponds (North Shields Street) offers ADA parking, paved access to picnic shelter and boardwalk access to an accessible fishing pier.
		Boardwalk to Fishing Pier	45 ft	41 in	Trex decking	Easy		
		Crusher Fines Trail near Fishing Pier	357 ft	3-4 ft	Crusher Fines	Moderate		
		Trail along south side of pond to split by river	690 ft	4-6 ft	Dirt	Difficult		
		River and West Pond Edges Trail	0.7 mi	18 in-3 ft	Dirt	Difficult		
		Trail around Sterling Pond	0.6 mi	8 ft	Dirt two track	Difficult		
Pelican Marsh	Yes	Benson Spur	0.1 mi	8 ft	Concrete	Easy	No	On-street parking available along Eden Ridge Lane at Waterway's Park. ADA restroom and paved trail access to Pelican Marsh available thru Waterway's Park.
		Water's Way Park to Carpenter Road	0.5 mi	8 ft	Concrete	Easy		
		East Neighborhood Connector	0.1 mi	8 ft	Concrete	Easy		
		Carpenter Rd Trail	0.5 mi	5 ft	Crusher Fines	Moderate		

Site	Open to Public	Trail	Trail Length (at site only)	Trail Width	Trail Type	Wheelchair/MMD* Rating	ADA Parking	Comments
Picnic Rock	Yes	Picnic Area	N/A	4 ft	Sand/Dirt	Difficult	No	The parking lot at Picnic Rock (HWY 14) is a natural surface lot with a vault toilet and picnic tables (non-ADA). Site is very sandy, with steep river access in spots making it very difficult for MMD's.
		Access to River	N/A	8 ft	Steps/Sand/Rock	Very Difficult		
Pineridge	Yes	Fossil Creek Trail	0.6 mi	10 ft	Concrete	Easy	Yes	The parking lot at Pineridge (County Road 42C) offers ADA parking with access to vault toilet and picnic areas. Additional parking available at Spring Canyon Park (W Horsetooth Road) and Cottonwood Glen Park (S Overland Trail). Majority of trails can become narrow in places, with bridges, trail structures, and steep/rocky terrain. All pedestrian access gates are a minimum of 48-inch wide.
		Foothills Trail (42C to east side of Ridge)	0.9 mi	2-9 ft	Dirt/Mulch/Gravel	Very Difficult		
		Foothills Trail (W. Horsetooth Rd. to Ridge Trail to Foothills Trail)	1 mi	6-10 ft 48-in wide gate	Dirt/Gravel	Very Difficult		
		Ridge Trail to Foothills Trail	0.5 mi	5 ft	Crusher Fines	Moderate		
		Reservoir Loop from 42C to Dixon Dam	0.5 mi	8 ft 48-wide gate	Dirt/Gravel	Very Difficult		
		Reservoir Loop from east side of Dixon	1.9 mi	24 in-8 ft 48-in wide gate	Dirt	Very Difficult		
		Ridge Trail	0.5 mi	5-12 ft 48-in wide gate	Blacktop/Dirt	Difficult		
		Skimmerhorn to Foothills Trail	0.1 mi.	4 ft 48-in wide gate	Dirt	Very Difficult		
		South Loop Trail	0.7 mi.	16 in to 6 ft	Dirt/Fine Gravel	Difficult		
		Spring Creek Trail/Overland Trail	0.1 mi.	4-6 ft 48-in wide gate	Dirt/Gravel	Very Difficult		
		Timber Trail	1.0 mi.	18-36 in	Dirt/Fine Gravel	Very Difficult		
		Valley Trail	0.7 mi.	8 ft	Dirt/Gravel	Very Difficult		
		Viewpoint Spur	0.4 mi	2 ft	Dirt	Very Difficult		
Prairie Dog Meadow	Yes	Bench Spur	0.1 mi	4 ft	Crusher Fines	Moderate	No	Trail currently under construction (4/1/2019).
Prospect Ponds	Yes	Poudre River Trail	0.7 mi	10 ft	Blacktop/Concrete	Easy	No	The north parking lot (Sharp Point Drive) at Prospect Ponds is paved, yet there is no painted ADA space (currently). The majority of the south parking lot is natural surface parking with no ADA parking space.
		West Side Trail Between Ponds	150 ft	7 ft	Blacktop	Easy		
		Catfish Pond Northeast Side and East Trail	0.2 mi	2-5 ft	Dirt/Rocky	Difficult		
		Merganser Pond North and East Trail	0.3 mi	1-3 ft	Dirt/Rocky	Very Difficult		

Site	Open to Public	Trail	Trail Length (at site only)	Trail Width	Trail Type	Wheelchair/ MMD* Rating	ADA Parking	Comments
Red Fox Meadows	Yes	Kane Basin Perimeter Trail/Sidewalk	0.4 mi.	10 ft	Concrete	Easy	Yes	The parking lot at Red Fox Meadows (Longworth Road) offers ADA parking and paved access to vault toilet, informational kiosk, and wetland overlook.
		Parking Lot to wetland overlook	170 ft	4 - 6ft	Concrete/Timbers	Easy		
		Parking Lot to Bridge Trail	0.1 mi	8 ft	Road base	Moderate		
		New Mercer Ditch Trail	0.8 mi.	10 ft	Road base	Moderate		
		Red Fox Meadows Basin Trail	0.15 mi	5 ft	Road base	Moderate		
		Stuart Street Access	80 ft	6-8 ft	Bridge/Crusher Fines	Moderate		
		East Basin Trails	0.6 mi	18 in-8 ft	Dirt/Bridge	Difficult		
		Promenade Way Connector Trail	0.1 mi	5 ft	Road base	Moderate		
Redtail Grove	Yes	Fossil Creek Trail	0.2 mi	10 ft	Concrete	Easy	No	ADA parking, accessible restrooms and paved trail access is available at the Fort Collins South Transit Center (Fossil Blvd). Follow the paved Mason Trail south (0.6 miles) to Red Tail Grove, which offers trail connections to the Fossil Creek Trail.
		Long View Trail Spur	0.7 mi	10 ft	Concrete	Easy		
Redwing Marsh	Yes	Trail from Sandcreek Dr to Willox	0.2 mi	4 ft	Crusher Fines	Moderate	No	The parking lot at Redwing Marsh (Sandcreek Drive) is a natural surface lot. ADA parking, accessible restrooms, picnic shelters and paved sidewalks bordering Redwing Marsh are available at Greenbrier Park (Bramblebush Street).
		Spur south of Willox	100 ft	4 ft	Crusher Fines	Moderate		

Site	Open to Public	Trail	Trail Length (at site only)	Trail Width	Trail Type	Wheelchair/ MMD* Rating	ADA Parking	Comments
Reservoir Ridge	Yes	Primrose Studio	200 ft	4 ft	Concrete/Boardwalk/ Crusher Fines	Moderate	Yes	Three parking lots are available at Reservoir Ridge. The Overland Trail parking lot offers ADA parking, accessible vault toilet, and paved access to a tree shaded picnic area. The Michaud Lane parking lot offers ADA parking with paved access to a vault toilet. The N County Road 23 parking lot is a natural surface parking lot with no accessible facilities. Primrose Studio is open to the public, via reservation Tuesday – Saturday (8 a.m. – 10 p.m.). The Studio offers ADA parking and a paved sidewalk to the accessible facility.
		Michaud Spur to Foothills Trail	1 mi	4 ft	Dirt	Difficult		
		Foothills Trail from North Overland Parking Lot to Michaud Spur	1.8 mi	4-10 ft	Dirt/Road base/ Boardwalk	Difficult		
		Rest of Foothills Trail and North Loop Trail	5.3 mi	18-24 in	Dirt/Rocky	Very Difficult		
River's Edge	Yes	Legacy Park north through River's Edge	0.1 mi	18-24 in	Dirt	Very Difficult	No	Non-ADA parking available at neighboring Legacy Park (Woodlawn Drive) .
Riverbend Ponds	Yes	Prospect Road Trail	0.4 mi	10 ft	Concrete	Easy	Yes	Three parking lots are available at Riverbend Ponds. The Cheryl Street parking lot offers ADA parking and paved trail access to accessible boardwalk. The Cairnes Drive parking lot offers ADA parking with paved access to a vault toilet and accessible fishing pier. The south parking lot off Prospect Road, does not have ADA parking, but has a road base surface trail (<0.2 miles) that leads to an accessible vault toilet.
		Large Loop from Prospect Parking Lot (along Poudre River and east side of	2.1 mi	6-8 ft	Dirt/Road base	Difficult		
		Boardwalk from Cherly St. Entrance	0.2 mi	4 ft	Concrete / Wood Decking	Easy		
		Loop around Turtle Pond	0.25 mi	18 in-4 ft	Crusher Fines/Dirt	Difficult		
		Loop and connecting trails around Bluegill Pond	0.8 mi	3-8 ft	Dirt	Difficult		
		Connecting trail (including bridge) between Trout and Wiper Ponds	0.2 mi	18 in	Dirt	Very Difficult		
		East and West Milne Ponds Connections to Main Trail and Prospect	0.2 mi	18-24 in	Dirt	Difficult		

Site	Open to Public	Trail	Trail Length (at site only)	Trail Width	Trail Type	Wheelchair/MMD* Rating	ADA Parking	Comments
Ross	Yes	Spring Creek Trail	0.7 mi	10 ft	Concrete	Easy	No	ADA parking, accessible restrooms, and access to Ross, via the Spring Creek trail, is available near the tennis complex at Rolland Moore Park.
		East Side Alternate	0.2 mi	6 ft	Crusher Fines	Moderate		
		South Rolland Moore Park Access	0.1 mi	4 ft	Concrete	Moderate		
Running Deer	Yes	Prospect Road Trail	0.4 mi	10 ft	Concrete	Easy	Yes	ADA parking, accessible vault toilet, and paved access to Prospect Road Trail is located off Prospect Road. Additional ADA parking and restroom available at the neighboring Colorado Welcome Center.
		Internal Trails	3.1 mi	8-10 ft	Dirt/Gravel	Difficult		
Salyer	Yes	River Trail	0.25 mi	4-6 ft	Dirt	Difficult	No	Non-ADA parking available at neighboring McMurry Natural Area (Hickory Street) or Legacy Park (Woodlawn Drive).
		Hickory Trail	0.2 mi	10 ft	Concrete	Easy		
Shields River Access	Yes	Poudre Trail Connection	0.23 mi	8 ft	Concrete	Easy	Yes	ADA parking, accessible vault toilet, and paved access connection to the Poudre Trail is located off of N Shields Street.
Soapstone Prairie	Yes (Mar-Nov)	Lindenmeier Trail	0.3 mi	5 ft	Concrete	Easy	Yes	Two parking lots are available at Soapstone Prairie. The south parking lot offers ADA parking, accessible vault toilet, and paved trail access to a picnic shelter. The parking lot also offers visitors a mobility assisted horse ramp (moderately accessible crusher fine). The north parking lot offers ADA parking, accessible vault toilet, paved trail access to a picnic shelter, and paved trail access to the Lindenmeier Overlook shelter.
		South Parking Lot Picnic Shelter	<0.1 mi	5ft	Concrete	Easy		
		Towhee Trail	3.9 mi	18-24 in	Dirt/Rocky	Very Difficult		
		Mahogany Trail	6 mi	18-24 in	Dirt/Rocky	Very Difficult		
		Pronghorn Loop	8.7 mi	4-14 ft	Dirt/Rocky	Very Difficult		
		Plover Trail (Closed April 1 - July 15)	7.1 mi	8-10 ft	Dirt/Rocky	Very Difficult		
		Sand Wash Trail	1.2 mi	12 ft	Dirt/Rocky	Very Difficult		
		Cheyenne Rim Trail	9.3 mi	4-12 ft	Dirt/Rocky	Very Difficult		
		Canyon Trail	5.9 mi	4-12 ft	Dirt/Rocky	Very Difficult		
Springer	Yes	Poudre River Trail	0.3 mi	10 ft	Concrete/Bridge	Easy to Moderate	No	Parking for the Poudre River Trail available at various locations (see Gustov Swanson).

Site	Open to Public	Trail	Trail Length (at site only)	Trail Width	Trail Type	Wheelchair/ MMD* Rating	ADA Parking	Comments
The Coterie	Yes	Spring Creek Trail	0.1 mi	10 ft	Concrete	Easy	No	ADA parking and facilities available at neighboring Edora Park, located 0.2 miles west off the Spring Creek trail.
Two Creeks	Yes	Fossil Creek Trail Connections	0.2 mi	4-8 ft	Concrete	Easy	No	ADA parking and restroom facilities available at Fossil Creek Park (Fossil Creek Parkway) and connects to Two Creeks via the paved Fossil Creek Trail.
Udall	Yes	Old Town Stormwater Loop	0.5 mi	4-10 ft	Gravel Road	Difficult	No	ADA parking and restroom facilities available at Buckingham Park (1st Street), but no sidewalk access to natural area.
Williams	Yes	Poudre River Trail	0.1 mi	10 ft	Concrete	Easy	No	Parking for the Poudre River Trail available at various locations (see Gustov Swanson).